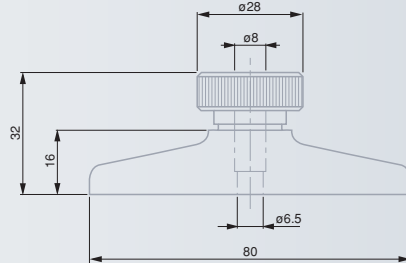


Dial Depth Gauges, Type PF1



Hardened steel



Finely lapped measuring faces.

Mount with clamp for a dial gauge or a probe.



Provided without dial gauge



Cardboard box



Declaration of conformity

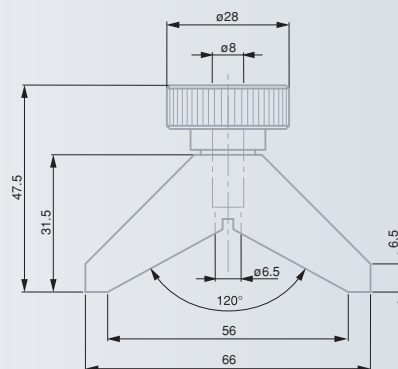


01639046

Flat base

mm
80 x 16

Mount
mm
Ø 8



01639047

V-base

mm
10 ÷ 100

Width
mm
120° 16

Mount
mm
Ø 8

Dial Gauges for Type SPF2 or PF1



EN ISO 463.
Factory standard.

Rotating dial with a 58 mm dia., reading on the left.

Full-metal housing. Long stem with a 8 h6 dia. (L = 42 mm for 555PF1, 32 mm for any other). Stainless steel plunger, hardened and ground.

Shockproof movement

Adjustable tolerance markers.

M2,5 coupling thread for the contact point.

Contact point with 3 mm dia. ball tip, already mounted

Cardboard box

Serial number

Inspection report with a declaration of conformity

Metric Models

	mm	mm	mm	mm	mm	μm	μm	μm	N	
532PF1	0,01	58	10	10,5	1	100 ÷ 50 ÷ 0	17	3	3	≤ 1,5
555PF1	0,002	58	5	5,3	0,2	20 ÷ 10 ÷ 0	14	1,5	2	≤ 1,5
556PF1	0,001	58	5	5,3	0,2	20 ÷ 10 ÷ 0	14	1,5	2	≤ 1,5

Inch Models

	in	mm	in	in	in	in	in	in	N	
533APF1	0.0005	58	0.400	0.420	0.050	50 ÷ 25 ÷ 0	0.0007	0.00015	0.00015	≤ 1,5
555APF1	0.0001	58	0.200	0.210	0.010	10 ÷ 5 ÷ 0	0.00055	0.0006	0.00008	≤ 1,5

