



Stand with lateral guiding faces. Vertical column that can be moved along the T-slot. Provided with 2 rigid articulations.

Cast iron base

3,3 kg

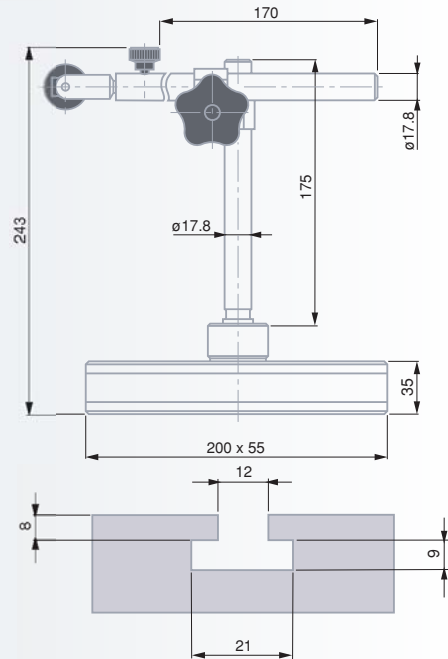
Supplied without indicator

Suited carrying case

Declaration of conformity

INTERAPID UD 12 Universal Stand

Medium-sized sliding support for dial test indicators (lever-type), dial gauges, electronic probes etc. – With fine adjust option.



No

=

01639000 INTERAPID UD 12 universal stand

Furnished with:

01640100 Clamp with a 8 mm dia. tightening

01840105 Clamping rod, 8 mm dia., with dovetail recess



Measuring table with ground measuring face. Dismountable column. Measuring arm with a 8 mm dia. tightening.

Cast iron table. Chrome-plated steel column. Spherical graphite cast iron arm.

3 kg

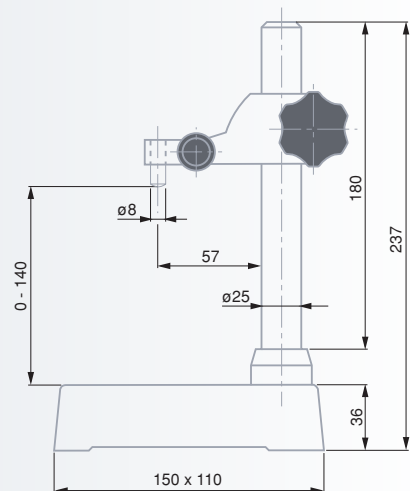
Supplied without indicator

Suited carrying case

Declaration of conformity

INTERAPID UA 1

Measuring stand without fine adjustment – Suitable as basic component for mounting specific workpiece attachments for series inspection.



No

=

01639008 INTERAPID UA 1 measuring stand



mm
0 ÷ 140

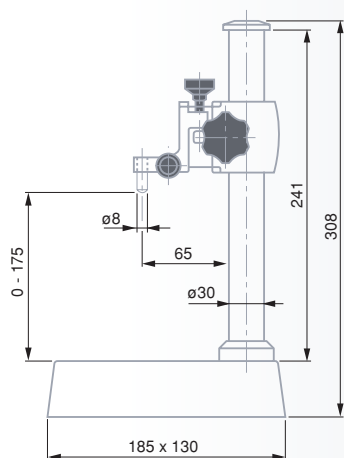


mm
100 x 100



INTERAPID UA 30

Basic component for mounting specific workpiece attachments for series inspection.



Basic stand

Ground measuring face.
2 T-slots.

Dismountable column

Cast iron table.
Chrome-plated steel column

Measuring arm

Fine adjustment within a range of 1 mm.

8 mm dia. clamping bore.

Sliding arm

Floating holder for TESA YA.

Adjustable swinging movement. 13 mm dia. clamping bore. 35, 57 or 80 mm travel length.

Measuring span 60 mm.

Depth stop plate

Dimensions:
115 x 35 x 3,5 mm.
120° vee recess
for diameters ≤ 120 mm.
Two tightening screws.

Additional data

4,85 kg (basic stand).
0,85 kg (measuring arm).
1,75 kg (sliding arm).

Supplied without indicator

Suited carrying case

Declaration of conformity



Measuring arm with a 8 mm dia. clamping bore, without fine adjustment. Measuring span 48 mm

Measuring table and column in hardened steel

2,7 kg

Supplied without indicator

Suited carrying case

Declaration of conformity

No



mm



mm

01639009 INTERAPID UA 30 basic stand (without measuring arm)

0 ÷ 175

125 x 115

Accessories

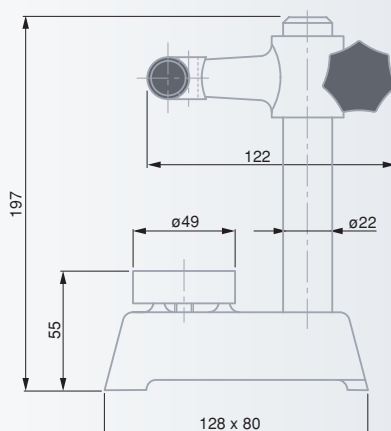
01610200 UK 20 measuring arm with fine adjustment

01610201 UK 25 sliding arm used in conjunction with TESA YA for stationary bore measurement (also see page G-6)

01640000 UAZ 10 depth stop plate

INTERAPID Small Measuring Stand

With round steel measuring table.



No



mm



mm

01639006 INTERAPID small measuring stand

0 ÷ 100

Ø 49



Supports



N° 01639035
black burnished
steel column with
a 8 mm dia. clamping bore.

N° 01639029

Chrome-plated column with
thread and setting ring for
height adjustable measuring
arm. 8 mm dia. clamping
bore. Measuring face with
dust grooves.

N° 01639030

Chrome-plated steel column.
Tilting measuring arm with
articulation.
4 or 8 mm dia. bore for a
dovetail clamp or lug.

N° 01639033

Chrome-plated steel
column. Sliding measuring
arm, horizontally.
4 or 8 mm dia. bore for a
dovetail clamp or lug.



3 µm as per
DIN 876 T1,
grade 00.



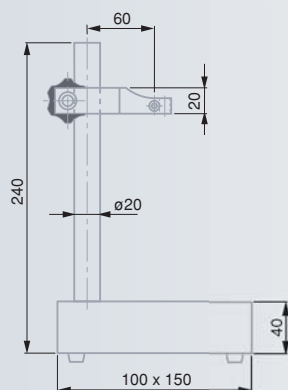
Supplied
without
indicator



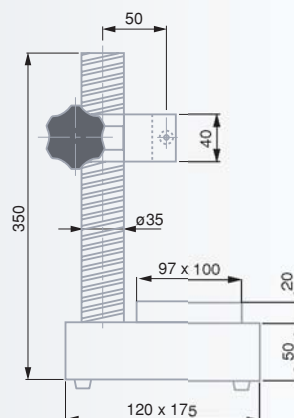
Suited
carrying case



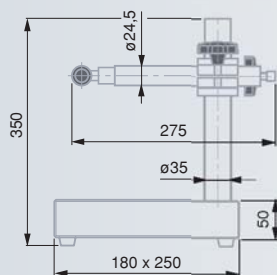
Declaration
of conformity



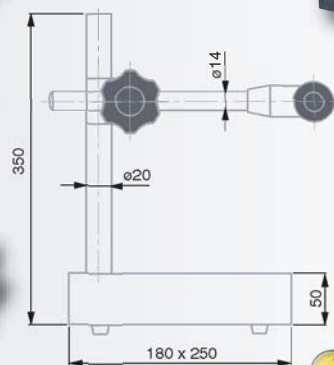
01639035



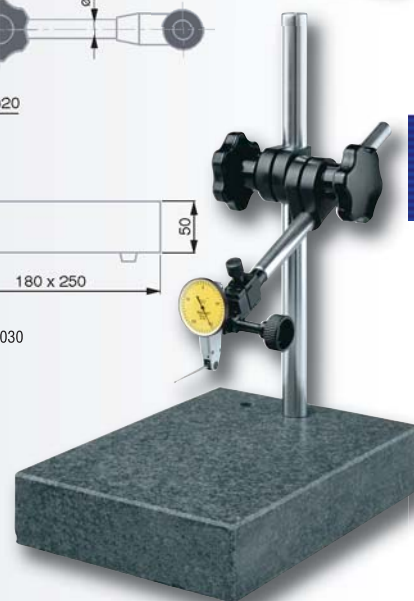
01639029



01639030



01639033



No	Measuring face	Measuring face mm	mm	Fine adjustment	Span mm
01639035	Granite	100 x 115	0 ÷ 170	—	50
01639029	Steel, hardened	100 x 100	0 ÷ 225	●	68,5
01639030	Granite	180 x 205	0 ÷ 240	●	adjustable
01639033	Granite	180 x 200	0 ÷ 260	●	adjustable
	Measuring table	Measuring table mm	Column mm	Column mm	kg
01639035	Granite	100 x 150 x 40	20	200	2,6
01639029	Granite	120 x 175 x 50	35	300	8,1
01639030	Granite	180 x 250 x 50	20	300	8,4
01639033	Granite	180 x 250 x 50	35	300	10,5

INTERAPID UM 20

Stable stand for measuring small parts accurately.



INTERAPID UM 20 measuring stand (without measuring table)

Height adjustable table mount with thread and fine adjustment. Clamping groove for UMZ 12 depth stop (No. 01640300).



01639002

0 ÷ 40

15



With a 8 mm dia. tightening plus two 6 mm dia. clamping bores for the UPZ 6 probe-holder. Measuring span 35 mm.



3 kg (measuring stand alone)



Supplied without indicator



Suited carrying case



Declaration of conformity



UMZ 40 meas. table with dust grooves

Hardened steel, lapped measuring face.



01640302

Ø 66 x 12



UMZ 41 plain measuring table

Hardened steel, finish ground measuring face.



01640303

Ø 66 x 12



UPZ 6 double probe-holder

8 mm dia. mounting bore for 2 probes. Clamped on the measuring stand with 2 shafts having a 6 mm dia.



Sideways mm

01640401

13 ÷ 80



UMZ 12 depth stop

Clamp to be mounted in the T-slot of the basic stand. Hardened and ground stop plate.



Resting face mm

01640300

55 x 11

UMZ 13 side stop

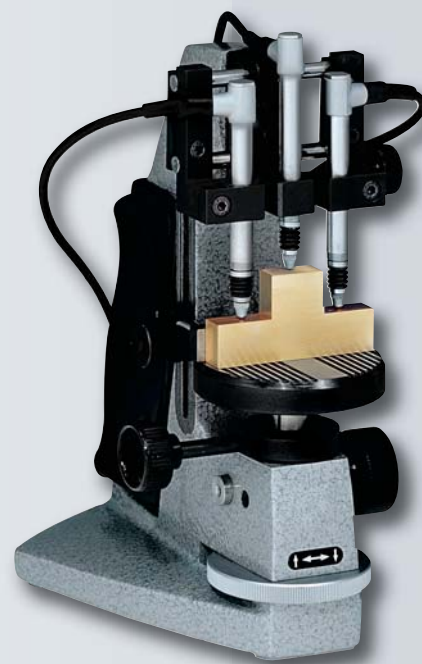
Hardened and ground. For use along with UMZ 12.



Resting shoulder mm

01640301

31,5 x 10 x 3





A Heavy cast-iron base

S Sensor and holder not included

S Stand alone 4,4 kg

S Suited wooden case

S Declaration of conformity

S Application range 0 to 60 mm. Measuring table

with measuring span of 10 mm.

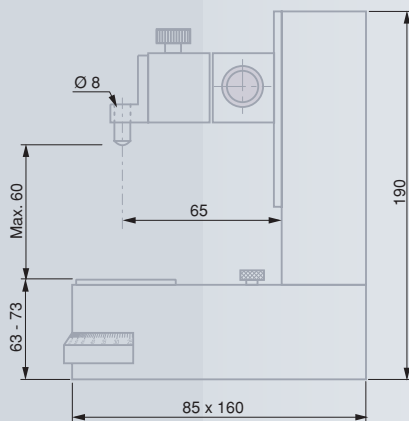
Can be locked by step of 0,01 mm.

Spindle accuracy: 1 µm over 10 mm.

Measuring arm with both a rack mechanism and built-in fine adjust device.

KMV 61 Measuring Stand

Precision made even more easier.



Measuring table and holder for a value sensor not included



mm



mm



mm

Measuring table with micrometer element

01639050

0 ÷ 60

0 ÷ 10

0,01



Holder for value sensor

01640430

Holder with a 8 mm dia. clamping bore for a probe or a dial gauge

01640431

Holder for I-DIM probes



Measuring tables

On request

T-3050

Rotating table provided with 25 clamping holes.

On request

T-4010

Plain steel table, 50 mm diameter, for thickness measurement.

On request

T-5010

Plain steel table, 50 mm diameter with both a 5H6 dia. clamping bore in the middle and locking screw for mounting a swivel pin or a shaft.

On request

T-6010

Plain steel table, 50 mm diameter, with a 5 mm dia. steel plate in the middle

On request

T-7010

Steel table, 50 mm diameter, with dust grooves

On request

T-7011

Grooved steel table, 117 mm diameter, with cut off end for large workpieces and the like

On request

T-7012

Plain steel table, 117 mm diameter, with cut off end for large workpieces

On request

T-9010

Grooved steel table, 50 mm diameter, with a 5 mm dia. steel plate in the middle



T 4010 - T 7012



T 6010



T 9010



T 7010 - T 7011



T 5010



T 3050



INTERAPID Universal Stands UP

These two universal stands provide different height levels along with a wide range of accessories that serve for setting up a variety of measuring configurations – High-precision components, also highly stable and extremely wear-resistant – Guaranteed lowest measurement uncertainty for the skilled manufacturing shop floor.

Besides dial gauges, precision indicators and dial test indicators (lever-type), both stands enable electronic probes to be mounted, especially to carry out direct, sum or comparative measurement (see section N).



A Heavy cast iron base with mounted ground steel column (50 mm dia.). Measuring arm with a 8 mm dia. tightening and 2 mounting bores having a 6 mm dia. for UPZ 6.

Fine adjust control using the protected knob. 1 mm travel length.



Base and measuring arm in cast iron. Dull-chrome plated steel column.



Supplied without indicator



Suitable carrying case



Declaration of conformity



INTERAPID universal stands UP (without measuring table)

Heavy cast iron models. Measuring arm with locking device and brake stop. For additional technical data, see opposite.

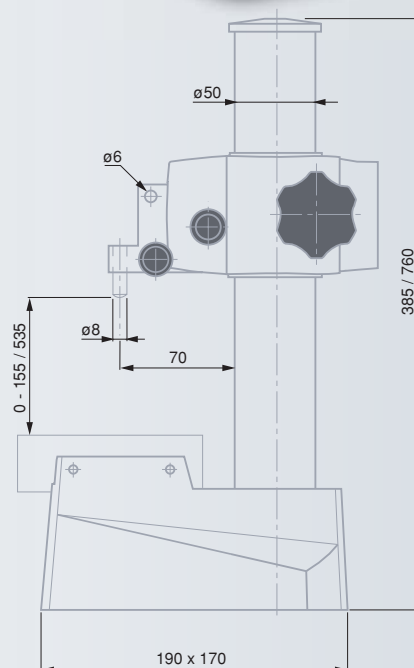


mm



kg

01639041	UP 160 measuring stand	0 ÷ 155	13,5
01639042	UP 200 measuring stand	0 ÷ 535	19





UPZ 40 standard measuring table

Hardened steel. Two measuring faces with dust grooves, lapped. One face has a 13 mm wide strip along the centre.



mm

µm

01640405

45 x 95

1



UPZ 46 A measuring table along with probe-holder

Feature a 8 mm dia. clamping bore for axial probes. Hardened and lapped measuring face with dust grooves as well as a 13 mm wide strip along the centre.



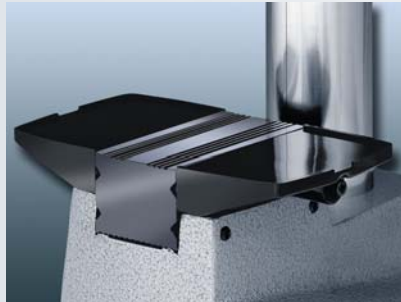
mm

µm

01640410

45 x 95

1



UPZ 20 side plates

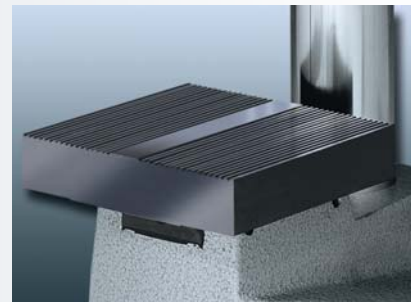
To be mounted sideways on both UPZ 40 and UPZ 46 A measuring tables. Made of black plastic. Supplied in pairs.



Resting face
mm

01640404

55 x 95



UPZ 47 large measuring table along with probe-holder

8 mm dia. clamping bore for axial probes. Hardened and lapped measuring face with dust grooves as well as a 18 mm wide strip along the centre.



mm

µm

01640411

120 x 120

1,5



UPZ 53 cross beam

For centre and vee supports. Made from cast iron and ground.



Length
mm

01640416

300



UPZ 52 resting blocks

For cylindrical or conical components. Resting plates with tungsten carbide pins, adjustable to the part diameter. Distance between plates matches ≤ 300 mm. Used with cross beam UPZ 53. Supplied in pairs.



mm

01640415

≤ 30



UPZ 55 V-blocks

Support parts on tungsten carbide pins. Distance between blocks matches ≤ 280 mm. With length stop. Used with cross beam UPZ 53. Supplied in pairs



mm

01640418

≤ 40

108°





UPZ 54 length stop

For use on the cross beam UPZ 53 with resting and V-blocks. A probe can be mounted instead of the stop rod.



01640417



UPZ 51 centre supports

For axial and radial run-out inspection. Max. distance between points: 155 mm. Feature solid and spring-loaded hollow points, movable lengthwise but also lockable. Used with cross beam UPZ 53. Supplied in pairs.



Height of points
mm

01640414

50



UPZ 6 double probe-holder

Tightening collar, 8 mm dia., for 2 electronic probes. Mounted on the stand by means of 2 shafts having a 6 mm dia.



Lateral
mm

01640401

13 ÷ 80



UPZ 15 limit stop

Mounted with clamp on the column. Hardened, dull-chrome plated.



Stop face
mm

01640403

68 x 20

UPZ 14 stop plate

For use with limit stop UPZ 15. Hardened, dull-chrome plated.



Vee angle

01640402

120°



UPZ 60 rack and pinion slide

For vertical adjustment of the measuring arm.



Travel length
mm

01640419

185



UPZ 42 measuring arm with micrometer head

Robust construction with built-in ISOMASTER micrometer head and spindle lock. Conform to DIN 863, part 2. Tungsten carbide measuring face.



mm



mm



mm



µm

01640406

0 ÷ 25

0,01

Ø 8

3

UPZ 43/1 contact point with flat measuring face

To be mounted on the micrometer element of the measuring arm UPZ 42.

Steel measuring face, hardened and lapped.



mm

01640407

Ø 30



UPZ 43/2 Contact point with a ball tip

To be mounted on the micrometer element of UPZ 42. Tungsten carbide ball tip.



Ball tip
mm

01640408

8

