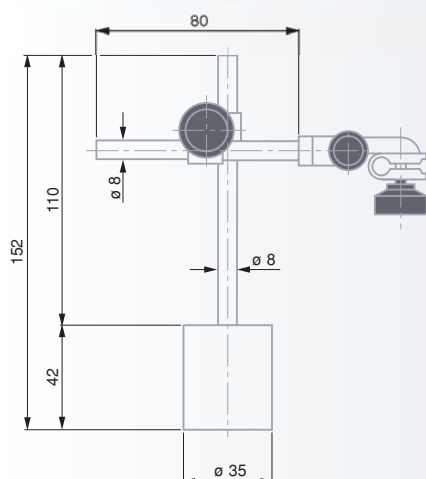


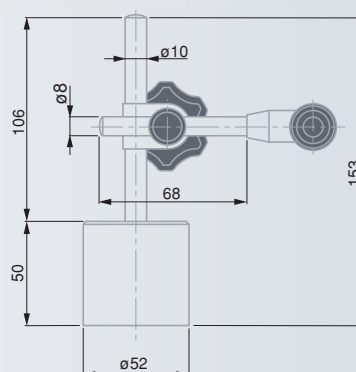
INTERAPID Small Magnetic Supports

Ideal for dial test indicators (lever-type) or dial gauges having a 40 mm dial diameter – Versatile due to 2 rigid joints and fine adjust option.

UJ 15 Model



UJ 15G Model



Rounded base with permanent magnet



Holding force on a flat surface:
≈ 220 N for UJ 15
≥ 350 N for UJ 15G



0,47 kg for UJ 15
0,93 kg for UJ 15G



Supplied without indicator



Suited carrying case



Declaration of conformity

Steel Base Plate



50 x 80 x 20 mm



0,60 kg

No

=

01639007

INTERAPID small magnetic support UJ15 with a 8 mm diameter clamping bore and dovetail clamp

01639016

INTERAPID small magnetic support UJ15G with both a 8 mm and 4 mm diameter clamping bore and dovetail clamp

Accessory

01640501

Steel base plate for use of UJ 15 as mobile support



Base has a vee recess and one magnetic flat face with disengageable magnet. Articulations made from duralumin.

Holding force on a flat surface ≈ 170 N

Dovetail clamp with a 8 mm diameter clamping bore

0,4 kg

Supplied without indicator

Suited carrying case

Declaration of conformity

Model with Articulated Arm



mm

01639025 INTERAPID small magnetic support with articulated arm

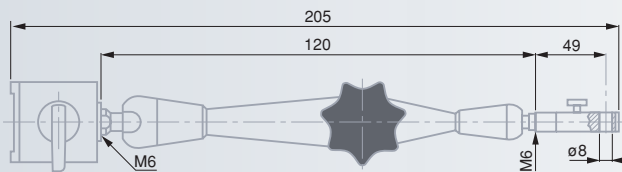
Full length 205

Consisting of:

1 Articulated arm Length 120

1 Dovetail clamp with fine adjustment

1 Magnetic base L x W x H 30 x 30 x 30



Model with a flat base has 2 rounded permanent magnets

72 x 38 x 11 mm for model with a flat base or 72 x 38 x 26 mm for model with a V-base

Holding force: ≈ 180 N for the flat base or ≈ 260 N for the V-base

Clamp with a 8 mm diameter clamping bore

Supplied without indicator

Suited carrying case

Declaration of conformity

Magnetic Supports with Flat or V-Base



01639011 INTERAPID magnetic support with a flat base

01639012 INTERAPID magnetic support with a V-base



INTERAPID Magnetic Supports

Standard Model and Models with Powerful Holding Force



Disengageable magnet.
Clamp with a
8 mm dia. clamping bore.



Supplied
without
indicator



Suited
carrying case



Declaration
of conformity



N



Fine
adjust



V-Base
for

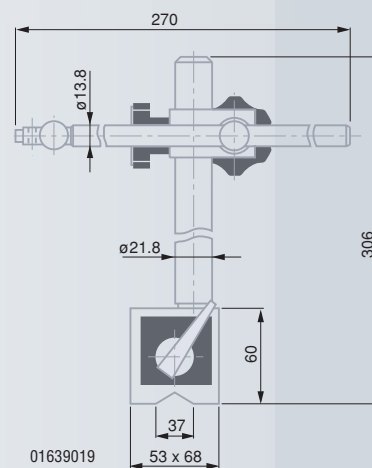
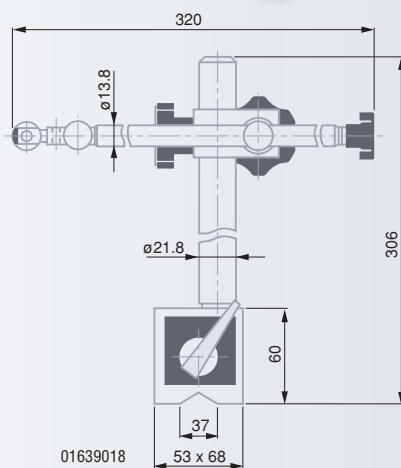
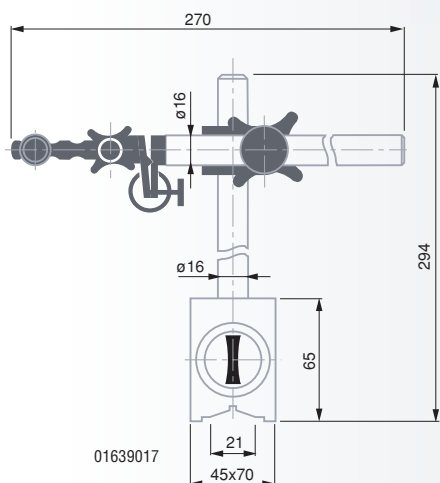
| | | | | |
|----------|------------------------|--------|---|----------|
| 01639017 | Standard model | ≈ 600 | ● | 70 ÷ 220 |
| 01639018 | Powerful holding force | ≈ 1000 | — | 70 ÷ 220 |
| 01639019 | Powerful holding force | ≈ 1000 | ● | 70 ÷ 220 |



01639017



01639019





Magnetic base has 2 flat faces plus 1 prismatic one. Articulations made from duralumin. Disengageable permanent magnet. Dovetail clamp with a 8 mm diameter clamping bore.

Magnetic base (L x W x H) 60 x 50 x 55 mm

1,45 kg or 1,85 kg

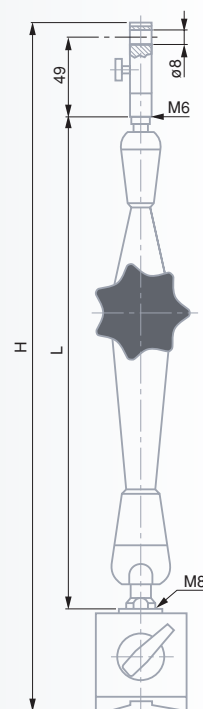
Supplied without indicator

Suited carrying case

Declaration of conformity

Models with Articulated Arm

Attach simply and securely using a single lobe knob – Solid arm with highly rigid articulations.



Nº

=

H mm

L mm

N

Fine adjust

V-Base for

01639022 Magnetic support

310

≈ 700

●

30 ÷ 150

01639023 Magnetic support

390

≈ 700

●

30 ÷ 150

Consisting of:

Articulated arm

200

Articulated arm

280

Clamp

Magnetic base

≈ 700

●

30 ÷ 150



Magnetic base has 2 flat faces plus 1 prismatic one. Disengageable permanent magnet. Full length 350 mm. Dovetail clamp with a 8 mm diameter clamping bore.

Holding force on a flat surface ≈ 1000 N

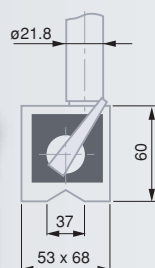
Supplied without indicator

Suited carrying case

Declaration of conformity

Model with Flexible Arm

For hard-to-reach locations – Lever controlled arm that holds securely on any surface.



Nº

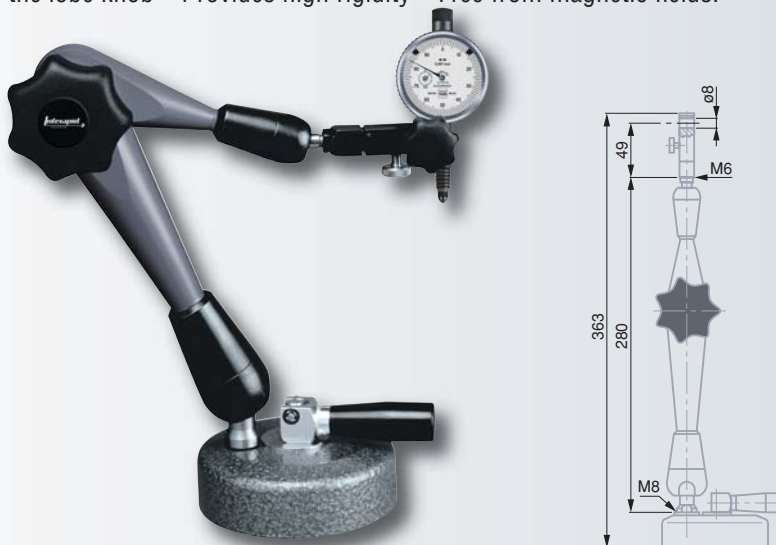
=

01639020

INTERAPID magnetic support with flexible arm

INTERAPID Measuring Support with Suction Base

Holds firmly on any plain, flat surface – Clamps easily and reliably over the lobe knob – Provides high rigidity – Free from magnetic fields.



Round suction base in duralumin (88 mm in diameter and 28 mm in height) with a flat face. Articulations in duralumin. Disengageable suction effect using the lever. Dovetail clamp with a 8 mm diameter clamping bore.



1,1 kg



Supplied without indicator



Suited carrying case



Declaration of conformity



H mm



L mm



N

Fine adjust

| | | | | | |
|-----------------------|---------------------------|-----|-----|-------|---|
| 01639024 | Support with suction base | 363 | 280 | ≈ 400 | ● |
| <i>consisting of:</i> | | | | | |
| | Articulated arm | | 280 | | |
| | Clamp | | | | ● |
| | Round suction base | | | ≈ 400 | |

INTERAPID Measuring Supports



Base with resting front face. Clamp for a 8 mm diameter mounting rod or a dial gauge with lug. Model No. 01639003 with added dovetail clamp



Cast iron base



1,3 kg or 4,35 kg



Supplied without indicator



Suited carrying case



Declaration of conformity



Used in conjunction with

| | | |
|-----------------|-------------------------|---|
| 01639003 | INTERAPID small support | Dial test indicators, small dial gauges |
| 01639004 | INTERAPID small support | Dial test indicators, dial gauges, precision indicators, electronic probes etc. |