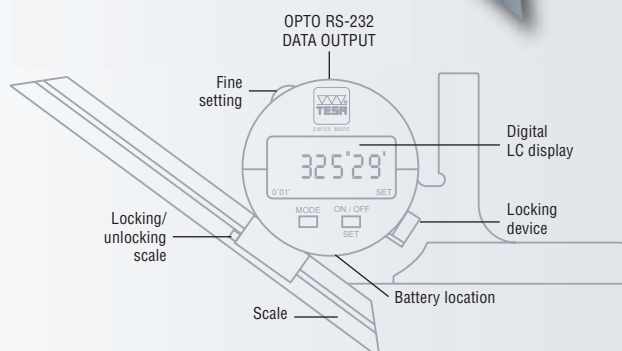


TESA Angle Protractor with Numerical Indication

- Decimal or sexagesimal large LC display
- 2 measuring directions
- Fine setting
- Locking device
- Scales - 200 300 or 500 mm



No

=

00630010

TESA angle protractor with numerical indication.
Provided with a regular scale, 200 mm long.

Accessories

00660004	Scale, 200 mm
00660005	Scale, 300 mm
00660006	Scale, 500 mm
00660007	Extra base with one flat plus one prismatic measuring faces for small angles
00660008	Edge square for sharp angles
01961000	3V lithium battery, type CR 2032, 190 mAh

For ordering information on connecting cables etc., see section N.



00660007



00660008



LCD,
5 digits + sign



Measuring
ranges: 1 x 360°,
2 x 180°, 4 x 90°



Digit height:
8,5 mm



Resolution:
0,01° or 1 minute
of arc (0°01')



Preset
to 0° or 180°



Max. perm. error:
4 minutes of arc



Max. perm.
rotation speed:
1080°/s



IP51
(IEC 529)



+5 °C to +40 °C



3V lithium battery,
type CR 2032



Battery life
> 3000 hours



RS 232,
opto-coupled



Stainless
steel body,
hardened



410 g



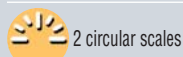
Wooden case



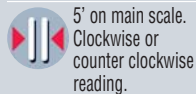
Serial number



Declaration of
conformity



2 circular scales



5' on main scale.
Clockwise or
counter clockwise
reading.



10° on the
auxiliary scale



Stainless steel,
hardened



Max. perm.
error: 5' (without
accessory)



Plastic case



Declaration
of conformity

TESA EAC Angle Protractors with Dial

Circular scale with pointer – Easy, reliable readout of both the main and auxiliary scales – Very low hysteresis – Precision movement mechanism with compensation of play.



Scale length
mm

00630001 4 x 90°

200

00630002 4 x 90°

300

Optional accessories



mm

00660002 Scale

200

00660003 Scale

300

00610101 Auxiliary scale for acute angles up to 15°

00610102 Cast iron base with steel bottom surface, hardened



00610102



00610101



5'



Stainless steel,
hardened



Max. perm.
error: 5' (without
accessory)

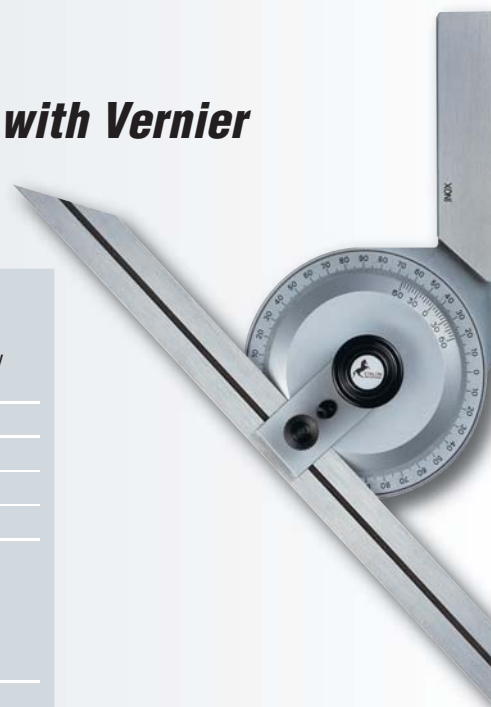


Plastic case



Declaration
of conformity

ETALON 436 Angle Protractor with Vernier



Scale
mm

Auxiliary
scale

076115566 4 x 90°

200

–

076115567 4 x 90°

300

–

076116009 4 x 90°

200

●

076116010 4 x 90°

300

●

Optional Accessories (as shown above)



mm

00660002 Scale

200

00660003 Scale

300

00610101 Auxiliary scale for acute angles up to 15°

00610102 Cast iron base with steel bottom surface, hardened

00610103 Magnifying glass



Brown & Sharpe Angle Protractor Combination

Commonly used as bevelled protractor, ruler, scale, try square, depth and centre gauge as well as spirit level.



Nº

=

06719000 Brown & Sharpe Angle Protractor Combination

Consisting of:

- 1 Ruler graduated in millimetres, 300 mm long
- 1 Protractor head with 2 x 90° graduations
- 1 Centre head
- 1 Square head with hardened steel scriber



Hardened steel,
wear protected
measuring faces



Suited plastic case

Brown & Sharpe Sine Bar

Suited for setting ranges from 0 to 60° – Sine function for establishing the angle that needs to be set on the basis of the length dimensions obtained from parallel gauge blocks.



Nº



Centre distance
mm



mm

06769005

127 ± 0,004

123 x 25



Hardened steel



Removable
front stop



Cardboard box



Declaration
of conformity



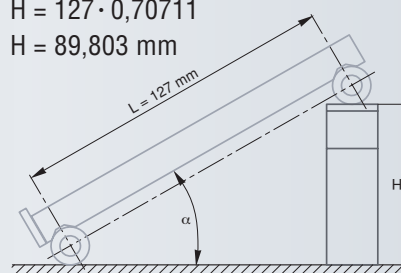
Calculating a 45° setting angle (example)

Gauge block combination H

$$H = l \cdot \sin \alpha$$

$$H = 127 \cdot 0,70711$$

$$H = 89,803 \text{ mm}$$





Angle standard made of fine-grained granite

Max. perm. error for squareness and straightness applies to the whole measuring range (carriage travel).

Valid for a theoretical line drawn symmetrically to the lateral guiding faces, at a distance of about 60 mm from the one in front of the angle standard.

ETALON RA only (without value sensor): 0,2 µm

Temperature stabilisation at < 0,1°C

Needed pressure: > 5 bar
Air consumption: < 20 l / min

Dimensions (L x W x H):
ETALON RA 300
200 x 80 x 484 mm
ETALON RA 500
250 x 80 x 634 mm
ETALON RA 700
250 x 80 x 884 mm

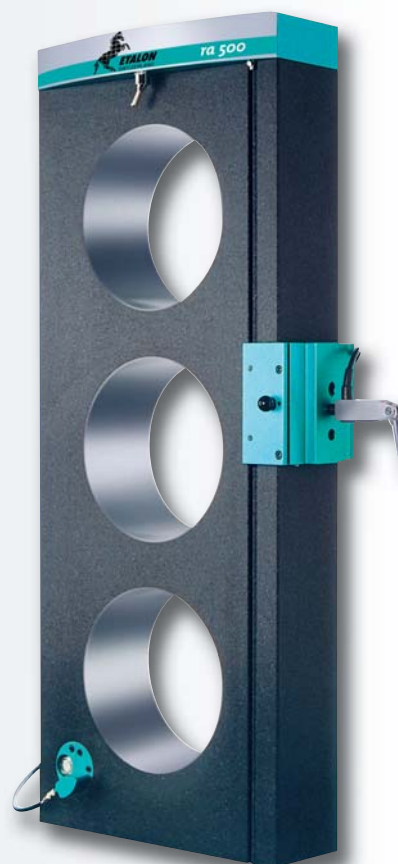
Suited carrying case

SCS calibration certificate

ETALON RA for Squareness Measurement

High-precision measuring instruments for determining squareness, straightness and parallelism errors – Perfect for use in the inspection laboratory as on the shop floor.

- Angle and straightness standards are made of natural granite with finely lapped measuring faces.
- Patented, hand moved carriage that attaches by vacuum on the guiding face of the angular standard. The grid potential thus obtained enables the carriage to be guided free of play.
- Base face on air bearing for easy displacement of the reference angle on the surface plate, practically without wear and tear.
- Helpful optional accessories to make measuring easy.



No	=	mm	Frontal µm	Lateral µm	µm	kg
05319200	ETALON RA 300	300	1	3	1	17
05319201	ETALON RA 500	500	1,2	5	1,2	26
05319202	ETALON RA 700	700	1,5	7	1,5	37
Optional Accessories						
05360007	Auxiliary vacuum square for mounting either a flat or a try square at right angle on the ETALON RA front face.					
05360008	Probe holder with a 8 mm dia. clamp for inspecting the angle lying inside a flat or a try square and the like.					
05360009	Air filter unit (oil and water collector)					
05360010	Wooden case for tool storage ETALON RA 300					
05360011	Wooden case for tool storage ETALON RA 500					
05360012	Wooden case for tool storage ETALON RA 700					

